

# ROLLING BEARINGS FOR RAILWAY APPLICATIONS

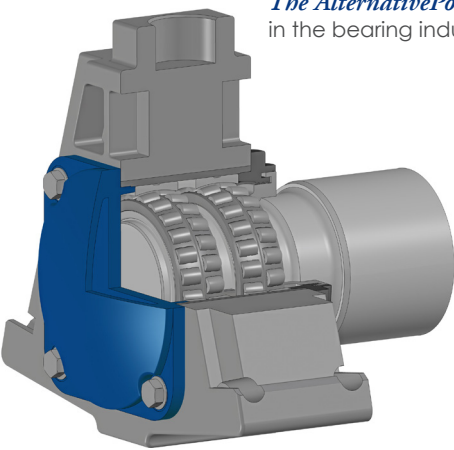
**RKB**  
BEARING INDUSTRIES

*The Alternative Power*



## RKB: the Swiss Premium-Class Bearing Manufacturer

The **RKB** Bearing Industries Group is the Swiss manufacturing organization operating in the bearing industry for over 70 years, with a monthly production capacity exceeding 350 tons of machined steel. The experience gained over the years provides **RKB** with the know-how and expertise necessary for the development and manufacture of technological industrial bearings up to 1925 mm outer diameter. **RKB** offers reliable cost-effective solutions, with extreme operational flexibility, leading-edge service, huge stock availability, short delivery time and the quality typical of a consistent premium-class bearing source. With a worldwide distribution network and exports to more than 50 countries, **RKB** is globally recognized as *"The AlternativePower"* in the bearing industry.



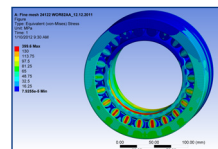
## RKB Bearings for the Railway Industry

The rolling bearings expressly designed and manufactured by **RKB** for the railway industry will help you ensure **smooth transportation operations** all over the world. The engineering know-how and manufacturing skills gained over time as well as the **international approval** from many key customers of the sector have made of **RKB** a well-known **reliable source** of top quality products and services for the specific needs of the railway players.



## Engineering and Manufacturing Solutions at Your Service!

- Technical consultancy
- Application analysis and feasibility study
- Engineering and design
- Advanced calculations
- FEM and semi-analytical simulations
- Project co-engineering
- Product customization and optimization
- Advanced and flexible manufacturing technology
- Qualified on-field assistance

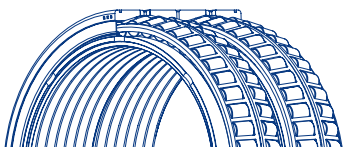


**RKB Europe SA**  
Executive Headquarters and Technological Center

Via Primo Agosto · 6828 Balerna  
Switzerland

Phone +41 91 260 09 30 · Fax +41 91 260 09 50  
info@rkbeurope.com · www.rkbbearings.com

ENGINEERED IN SWITZERLAND  
TECHNOLOGICAL BEARINGS



# ROLLING BEARINGS FOR RAILWAY APPLICATIONS

**RKB**  
BEARING INDUSTRIES

*The Alternative Power*



## Special Technical Features for RKB Railway Bearings

- **High cleanliness steels** (RKB RAV protocol) for extended service life
- **RKB Phosphate Treatment (PT)** for excellent friction, corrosion and wear resistance
- **RKB Stabilizing Treatment (S)** to avoid bearing dimensional changes due to temperature increase during operation
- **RKB Isothermal Bainite Heat Treatment (HB)** to remarkably reduce the incidence of cracking



STEEL.RAV

**PT**

PHOSPHATE

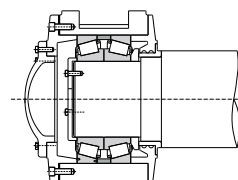
**S**

STABILIZATION

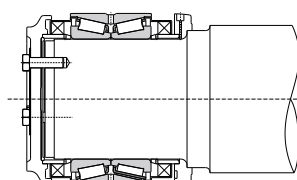
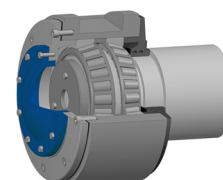
**HB**

BAINITE HT

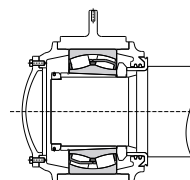
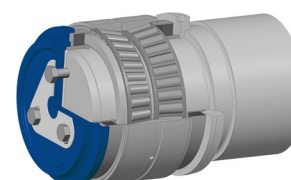
## Examples of RKB Railway Bearing Arrangements



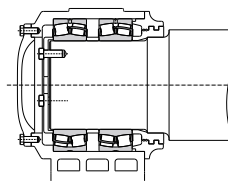
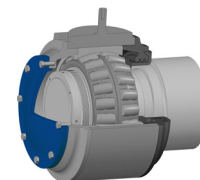
Double row taper roller bearings  
in face-to-face arrangement (TDI configuration)



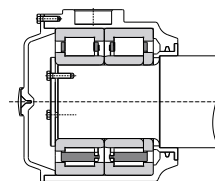
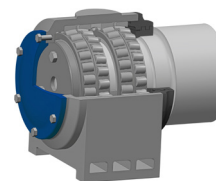
Double row taper roller bearings  
in back-to-back arrangement (TDO configuration)



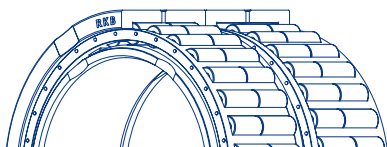
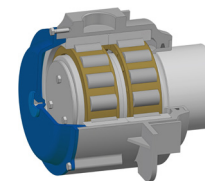
Single spherical roller bearings



Paired spherical roller bearings



Paired cylindrical roller bearings (NJW+NJPW configuration)



RKB Europe SA  
Executive Headquarters and Technological Center

Via Primo Agosto · 6828 Balerna  
Switzerland

Phone +41 91 260 09 30 · Fax +41 91 260 09 50  
info@rkbeurope.com · www.rkbbearings.com

ENGINEERED IN SWITZERLAND

TECHNOLOGICAL BEARINGS

