

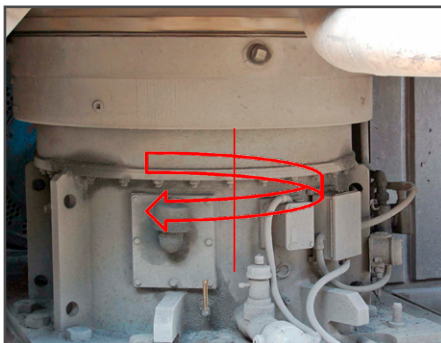
ROLLING BEARINGS FOR COAL PULVERIZER



RKB: the Swiss Premium-Class Bearing Manufacturer

The **RKB** Bearing Industries Group is the Swiss manufacturing organization which has been operating in the bearing industry since 1936, with a monthly production capacity exceeding 350 tons of machined steel.

The experience gained over the years provides **RKB** with the know-how and expertise necessary for the development and manufacture of technological industrial bearings up to 1925 mm outer diameter. **RKB** offers reliable cost-effective solutions, with extreme operational flexibility, leading-edge service, huge stock availability, short delivery time and the typical quality of a consistent premium class bearing source. With a worldwide distribution network and exports to more than 50 countries, **RKB** is globally recognized as “*The AlternativePower*” in the bearing industry.



Grinding table speed reducer

WHY TO WORK WITH US

RKB bearings are widely used in this type of application. One of the most appreciated characteristics is the reliability of our bearings, that permitted many customers to benefit of a sensible reduction of unexpected equipment failure. In fact, the first quality bearing steel used, the optimized internal bearing geometry, the optimal rolling elements and raceways profiling and much more, lead to an excellent distribution of the external loads inside the bearing and to reduce the negative effects induced by the level of vibrations proper of this kind of application.

All these technologies, corroborated by the constant presence of RKB on-field technical personnel, are maximizing the overall bearing service life, leading to an increased reliability of all the coal pulverizer.



RKB Cylindrical roller bearing



RKB Spherical roller bearings



RKB technical on-field activity in a power plant

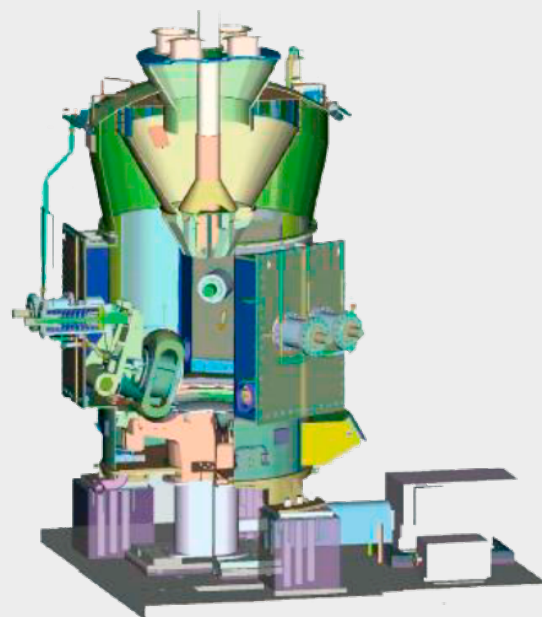
ROLLING BEARINGS FOR COAL PULVERIZER



APPLICATION DESCRIPTION

Nowadays, the ever-growing demand of alternative energy leads also to an important upgrade of traditional energy. In a coal power plants, a coal pulverizer assumes a paramount importance in order to increase boiler efficiency by providing pulverized coal with a specific granulometry. In a coal pulverizer, rolling bearings are fundamental.

RKB reached an enviable experience, competence and reliability in this specific application, obtaining successful and countless excellent results in providing bearings for the most critical coal pulverizer assemblies, like grinding rollers and grinding table speed reducers.

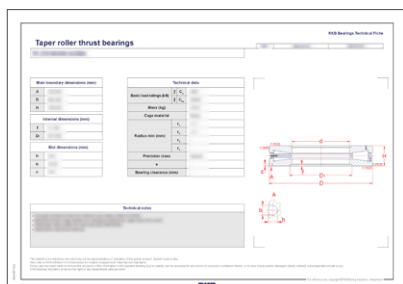


Coal pulverizer 3D model



Grinding roller bearings mounting

RKB Bearing Technical Fiche



Typical thrust tapered roller bearing design utilized by leading OEM power plant producer, located in a worm gear speed reducer (bowl mill vertical shaft assembly).